

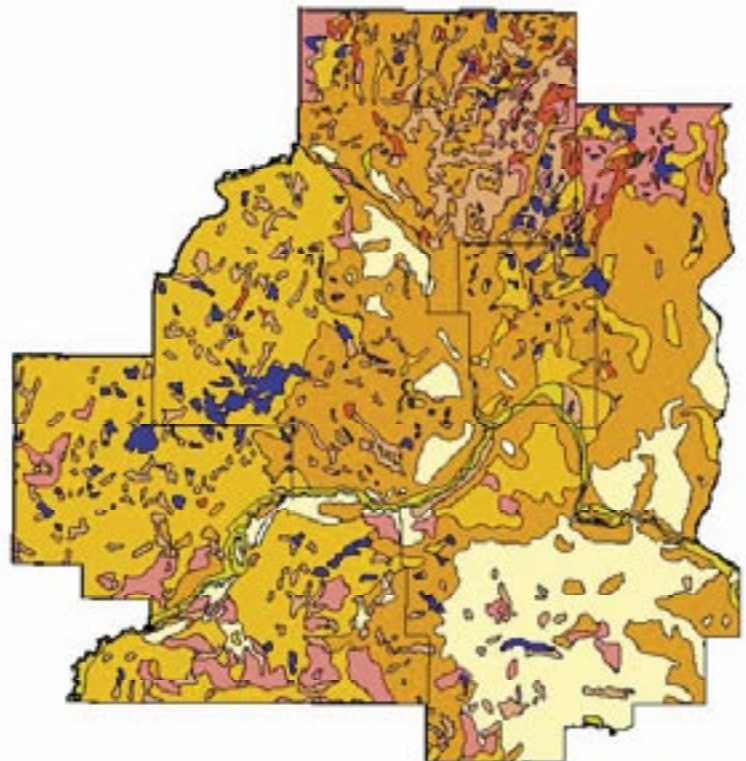


Native Plants for Gardens, Raingardens & Shoreline Stabilization

Restoring Habitat in the Twin Cities

The landscape around us once hosted a mosaic of plant communities: oak savanna, tallgrass prairie, wetlands, maple-basswood forests, etc. The occurrence of a particular plant community depends on topography, geology and disturbances, such as fire. Extensive land development and introduced invasive species have led to the destruction of a majority of these native plant communities and a fragmentation of the few plant communities that remain. Efforts should focus on restoring areas that reconnect and protect the remaining native plant communities.

Of the 1,903,640 acres that comprise the seven county metro area, native plant communities occupy approximately 3.5% of the total land area (66,400 acres).



- Prairie
- Wet Meadow
- Aspen Oak Land
- Oak Openings & Barrens
- Big Woods
- River Bottom Forest
- White Pine Forest
- Conifer Bogs & Swamps
- Open Water

**Plant List Created by
The Association of Metropolitan Soil
and Water Conservation Districts**

Native Plants Moist to Dry Soils - Shade



Columbine

Aquilegia canadensis

Ht: 36" Flower: Orange Bloom: May-June

Habitat: Full sun to shade. Moist to dry soils.

Woodland and Forest.

Harebells

Campanula rotundifolia

Ht: 24" Flower: Purple Bloom: June-September

Habitat: Full sun to part shade. Moist to dry soils.

Savanna and Woodland.



Pennsylvania Sedge

Carex pennsylvanica

Ht: 9" Flower: Brown Bloom: May

Habitat: Full sun to full shade. Moist to dry soils.

Woodland and Forest.

Wild Geranium

Geranium maculatum

Ht: 18" Flower: Purple Bloom: May-June

Habitat: Full to part shade. Moist to dry soils.

Woodland and Forest.



Bloodroot

Sanguinaria canadensis

Ht: 12" Flower: White Bloom: May

Habitat: Part sun to full shade. Moist to dry soils.

Woodland and Forest.

Bottlebrush Grass

Elymus hystrix

Ht: 48" Flower: Green Bloom: June-July

Habitat: Full sun to full shade. Wet to dry soils.

Woodland and Lake Edge.



Jacob's Ladder

Polemonium reptans

Ht: 18" Flower: Blue Bloom: May-June

Habitat: Part sun to full shade. Moist to dry soils.

Woodland and Forest.

Wild Ginger

Asarum canadense

Ht: 12" Flower: Maroon Bloom: May-June

Habitat: Part sun to full shade. Moist to dry soils.

Forest.



Tall Meadow Rue

Thalictrum dasycarpum

Ht: 48" Flower: White Bloom: June-July

Habitat: Full sun to part shade. Moist to dry soils.

Woodland and Lake Edge.

Rue Anemone

Anemone thalictroides

Ht: 18" Flower: Purple Bloom: May-June

Habitat: Part sun to shade. Moist to dry soils.

Woodland and Forest.



Native Plants Moist to Dry Soils - Sun



Narrow-Leaf Coneflower

Echinacea angustifolia

Ht: 24" Flower: Purple Bloom: July-August
Habitat: Full to part sun. Moist to dry soils.
Prairie and Savanna.
Native Plants Moist to Dry Soils - Sun

Little Bluestem

Schizachyrium scoparium

Ht: 36" Flower: Amber Bloom: July-September
Habitat: Full sun to part shade. Moist to dry soils.
Prairie and Savanna.



Butterflyweed

Asclepias tuberosa

Ht: 24" Flower: Orange Bloom: June-September
Habitat: Full to part sun. Moist to dry soils.
Prairie and Savanna.

Flat Topped Aster

Aster umbellatus

Ht: 36" Flower: White Bloom: July-August
Habitat: Full sun to full shade. Moist to wet soils.
Prairie and Lake Edge.



Northern Blazing Star

Liatris ligulistylis

Ht: 36" Flower: Purple Bloom: July-August
Habitat: Full to part sun. Wet to dry soils.
Prairie and Savanna.

Spiderwort

Tradescantia bracteata

Ht: 24" Flower: Purple Bloom: June-August
Habitat: Full to part sun. Moist to dry soils.
Prairie and Savanna.



Big Bluestem

Andropogon gerardii

Ht: 72" Flower: Purple Bloom: July-September
Habitat: Full sun to part shade. Moist to dry soils.
Prairie and Savanna.

Wild Onion

Allium cernuum

Ht: 18" Flower: Pink Bloom: July-September
Habitat: Full to part sun. Moist to dry soils.
Prairie and Savanna.



Prairie Coneflower

Ratibida pinnata

Ht: 48" Flower: Yellow Bloom: July-October
Habitat: Full to part sun. Moist to dry soils.
Prairie and Savanna.

Indiangrass

Sorghastrum nutans

Ht: 60" Flower: Amber Bloom: July-September
Habitat: Full sun to part shade. Moist to dry soils.
Prairie and Savanna.



Native Plants Wet Soils - Sun



Marsh Milkweed

Asclepias incarnata

Ht: 36" Flower: Purple Bloom: June-August

Habitat: Full sun to part shade. Wet to moist soils.

Wet Meadow and Lake Edge.

Fox Sedge

Carex vulpinoidea

Ht: 24" Flower: Green Bloom: May-June

Habitat: Full sun to part shade. Wet to moist soils.

Wet Meadow and Lake Edge.



Joe Pye

Eupatorium maculatum

Ht: 36" Flower: Purple Bloom: July-September

Habitat: Full sun to part shade. Wet to moist soils.

Wet Meadow and Wet Prairie.

Green-headed Coneflower

Rudbeckia laciniata

Ht: 48" Flower: Yellow Bloom: July-September

Habitat: Full sun to part shade. Wet to moist soils.

Prairie and Lake Edge.



Soft Rush

Juncus effusus

Ht: 36" Flower: Brown Bloom: July-August

Habitat: Full sun to part shade. Wet to moist soils.

Wet Meadow and Lake Edge.

Virginia Mountain Mint

Pycnanthemum virginianum

Ht: 36" Flower: White Bloom: July-September

Habitat: Full sun to part shade. Wet to moist soils.

Wet Meadow and Prairie.



Prairie Cordgrass

Spartina pectinata

Ht: 72" Flower: Yellow Bloom: August-October

Habitat: Full to part sun. Wet to moist soils.

Wet Meadow and Lake Edge.

Bottle Gentian

Gentiana andrewsii

Ht: 24" Flower: Blue Bloom: August-October

Habitat: Full to part sun. Wet to moist soils.

Wet Meadow and Lake Edge.



Golden Alexanders

Zizia aurea

Ht: 36" Flower: Yellow Bloom: May-July

Habitat: Full sun to part shade. Wet to moist soils.

Wet Prairie and Savanna.

Boneset

Eupatorium perfoliatum

Ht: 36" Flower: White Bloom: June-August

Habitat: Full sun to part shade. Wet to moist soils.

Wet Meadow and Prairie.



Native Plants Wet Soils - Shade



Marsh Marigold

Caltha palustris

Ht: 18" Flower: Yellow Bloom: May-June

Habitat: Part sun to shade. Wet soils.

Wet Meadow.

Fringed Sedge

Carex crinita

Ht: 36" Flower: Green Bloom: May-June

Habitat: Full sun to part shade. Wet to moist soils.

Wet Meadow and Lake Edge.



Sensitive Fern

Onoclea sensibilis

Ht: 24"

Habitat: Part sun to full shade. Wet to moist soils.

Wet Meadow and Forest.

Cardinal Flower

Lobelia cardinalis

Ht: 36" Flower: Red Bloom: July-October

Habitat: Full sun to part shade. Wet to moist soils.

Wet Meadow and Lake Edge.



Blue Flag Iris

Iris versicolor

Ht: 36" Flower: Blue Bloom: June-July

Habitat: Full sun to part shade. Wet soils.

Wet Meadow and Lake Edge.

Long Beaked Sedge

Carex sprengeii

Ht: 18" Flower: Green Bloom: June-July

Habitat: Part sun to full shade. Wet to moist soils.

Woodland and Forest.



Blue Lobelia

Lobelia siphilitica

Ht: 30" Flower: Blue Bloom: July-October

Habitat: Full sun to part shade. Wet to moist soils.

Wet Meadow.

Jack-in-the-Pulpit

Arisaema triphyllum

Ht: 30" Flower: Green Bloom: May-June

Habitat: Part sun to shade. Wet to moist soils.

Wet Meadow and Forest.



Sweet Grass

Hierochloa odorata

Ht: 24" Flower: Green Bloom: May-June

Habitat: Full sun to part shade. Wet to moist soils.

Wet Meadow and Lake Edge.

Canada Anemone

Anemone canadensis

Ht: 24" Flower: White Bloom: May-June

Habitat: Full sun to part shade. Wet to moist soils.

Wet Meadow and Lake Edge.

